

Japan's and Australia's ageing populations and its impact on women.

Cross-country comparison.

by Ewa Orzechowska-Fischer

Demography and Sociology Programme

Australian National University

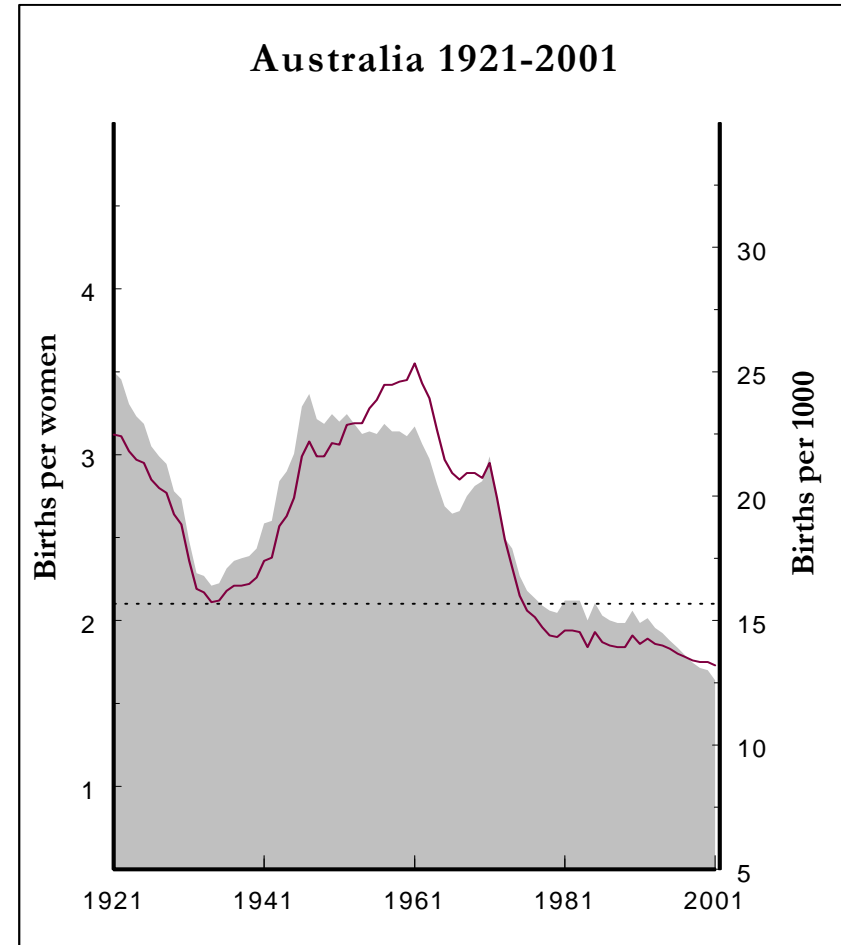
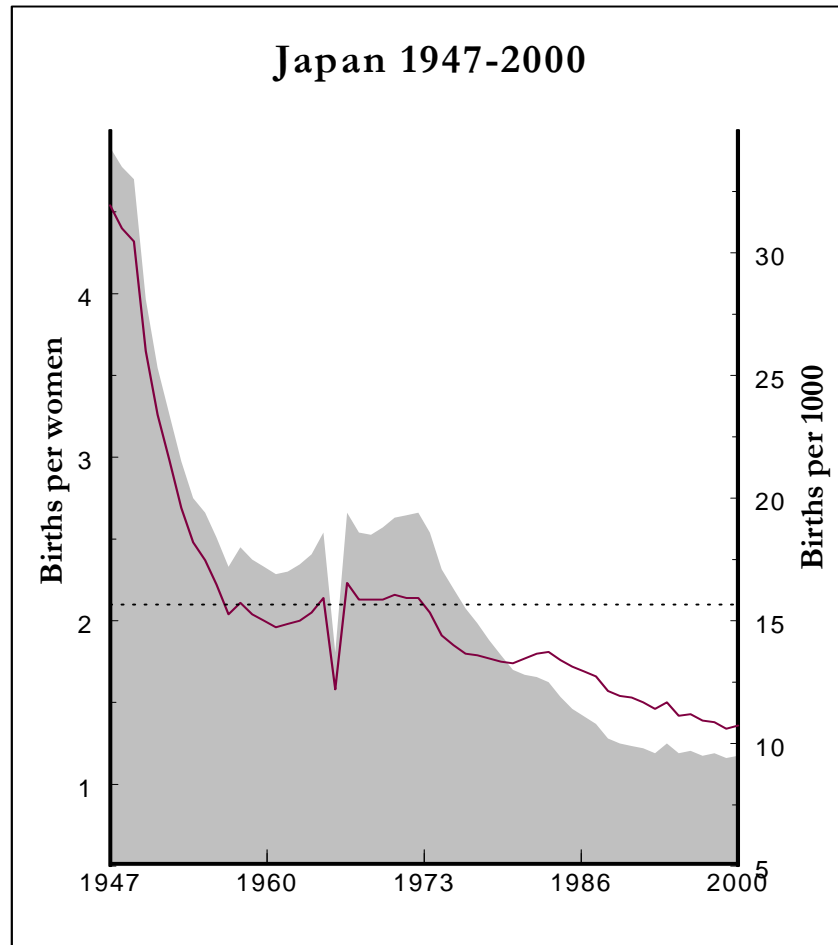
2nd Asian Women Parliamentarians' and Ministers' Conference, 30 June, 2004,
Parliament House, Canberra

Outline

1. Fertility decline: the driving force of the population ageing
2. Ageing of populations and its implications for the size and composition of labour supplies
3. The role of females in overcoming problems posed by ageing labour supplies

Fertility decline:

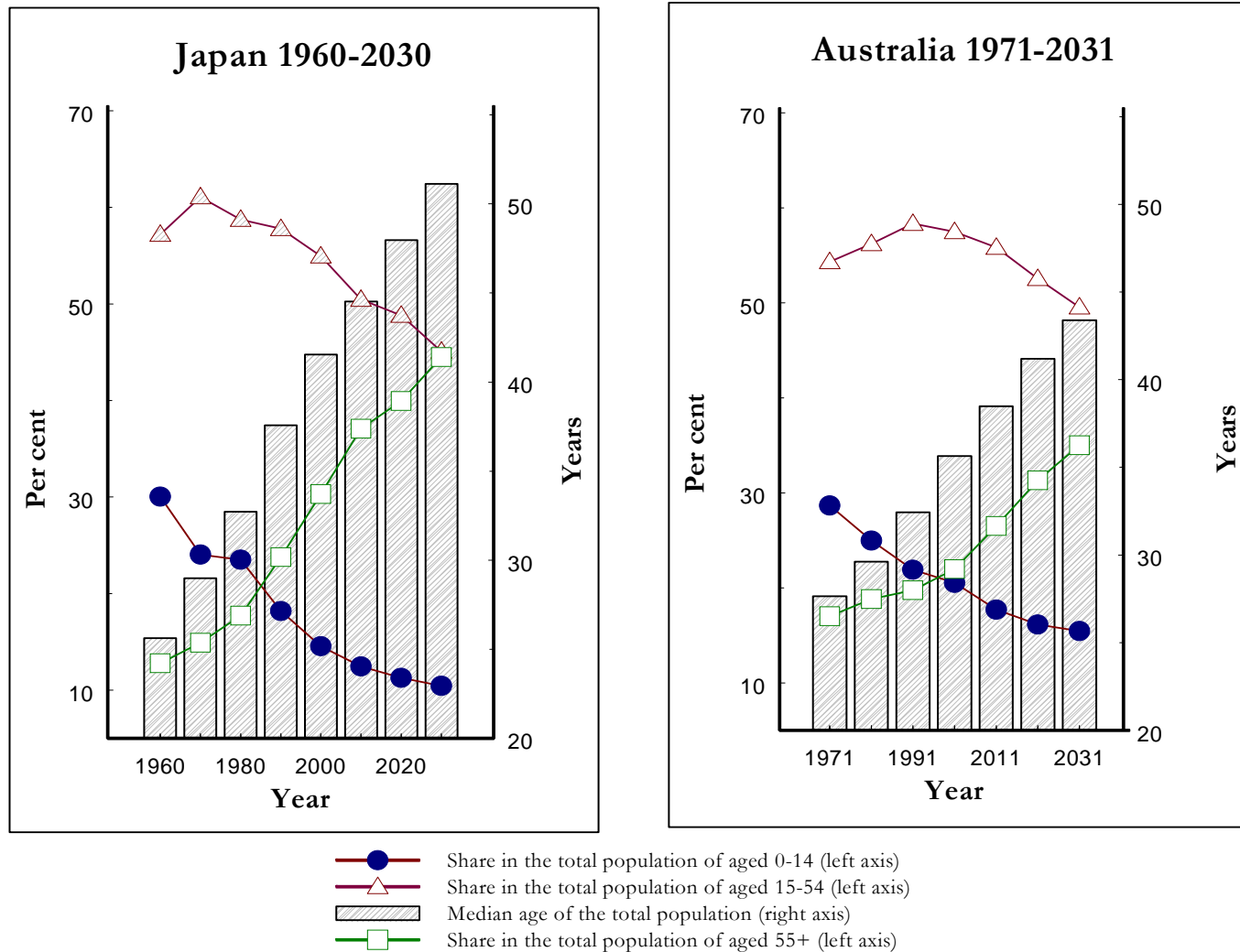
the driving force of population ageing in **Japan and Australia**



— Total fertility rate (left axis)
— Crude birth rate (right axis)

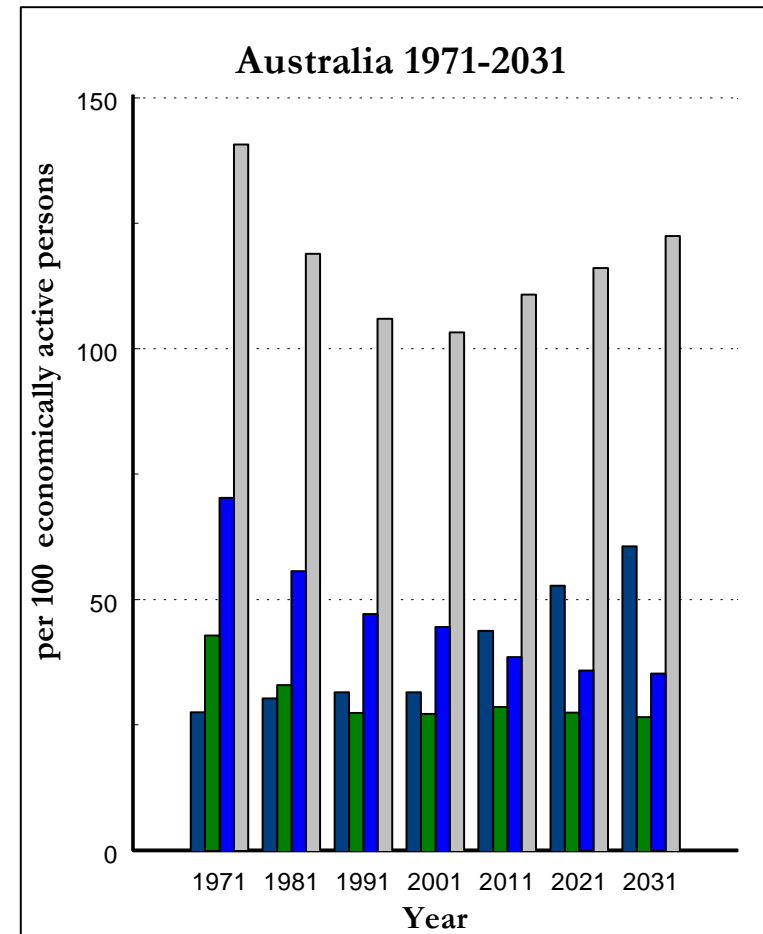
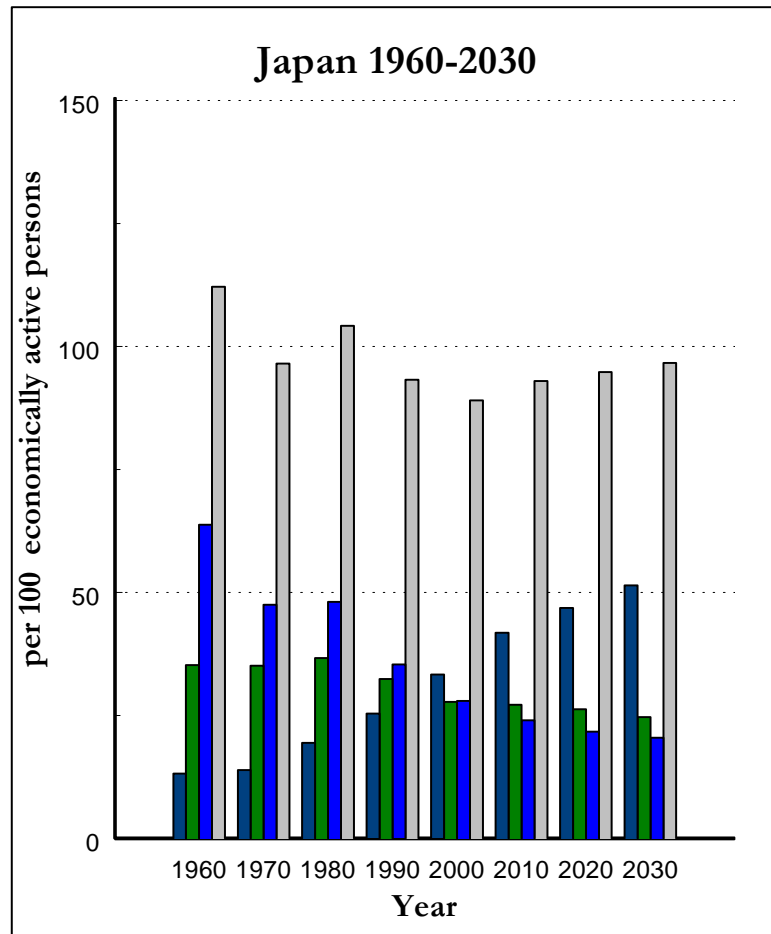
Ageing of populations:

shifts in the age structure in Japan and Australia



Ageing of populations:

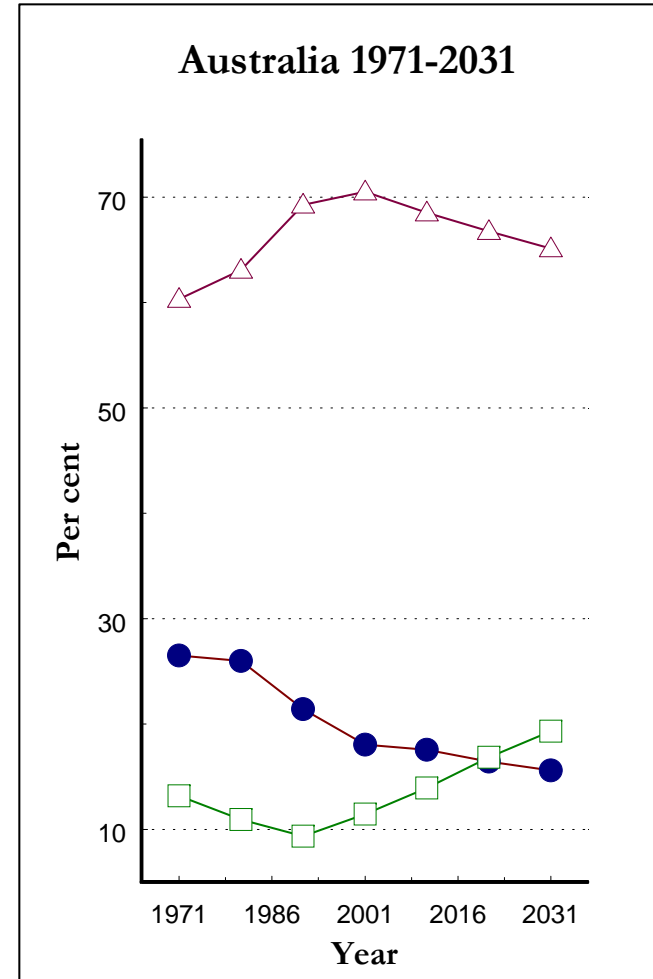
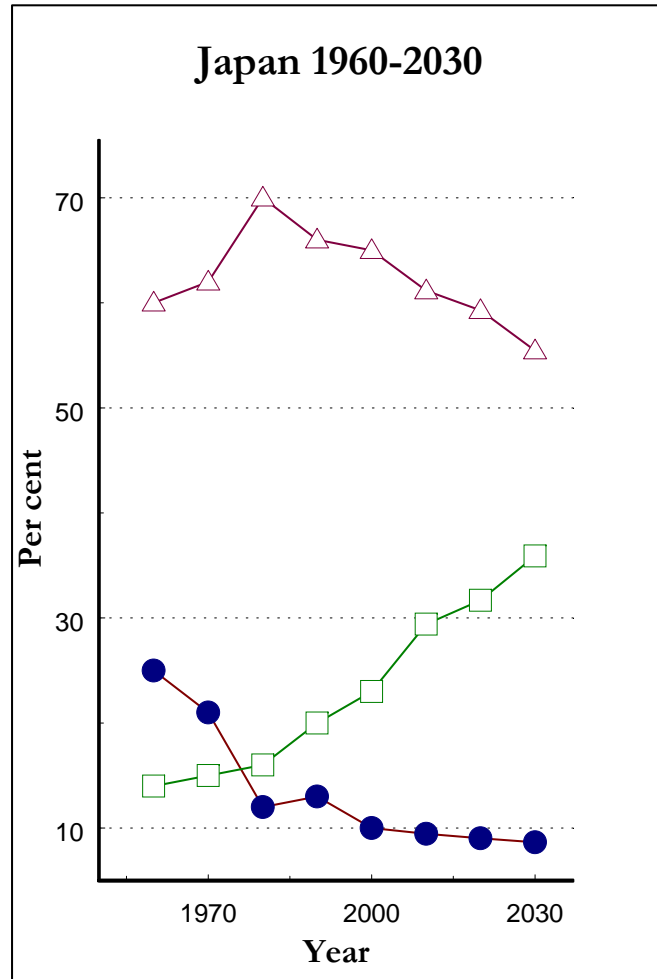
rising economic dependency ratio in Japan and Australia



- Aged 55+ dependency ratio
- Aged 15-54 dependency ratio
- Aged 0-14 dependency ratio
- Total dependency ratio

Labour force ageing:

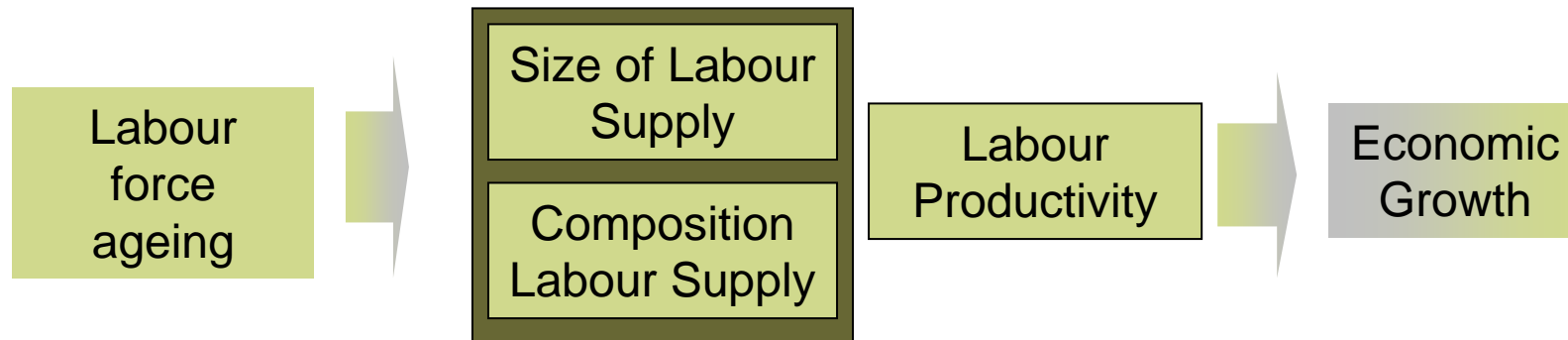
changing composition of labour supply in Japan and Australia



- Share of aged 15-24 in the total labour force
- ▲ Share of aged 25-54 in the total labour force
- Share of aged 55+ in the total labour force

Labour force ageing:

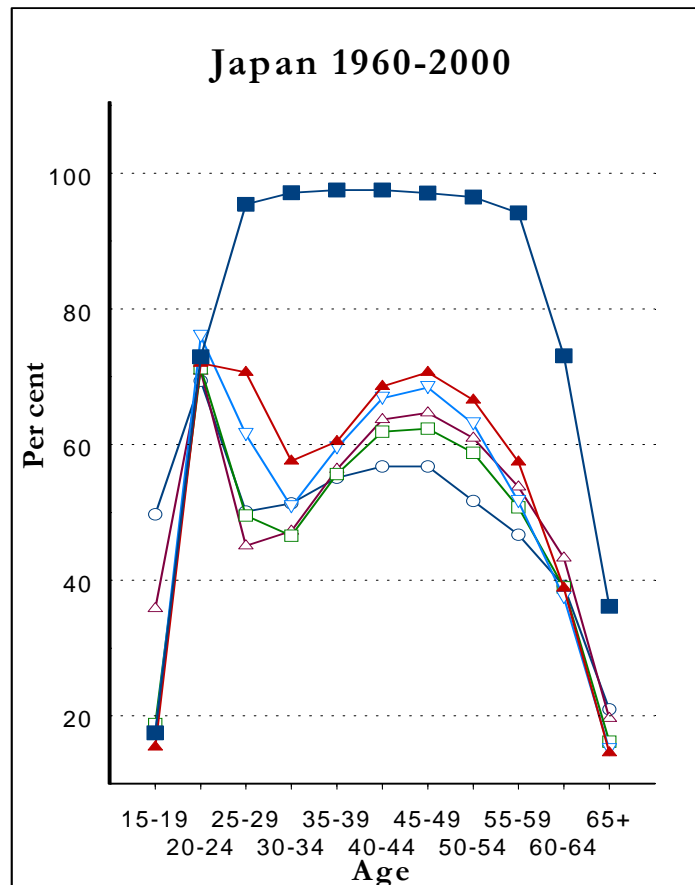
economic implications and policy options in Japan and Australia



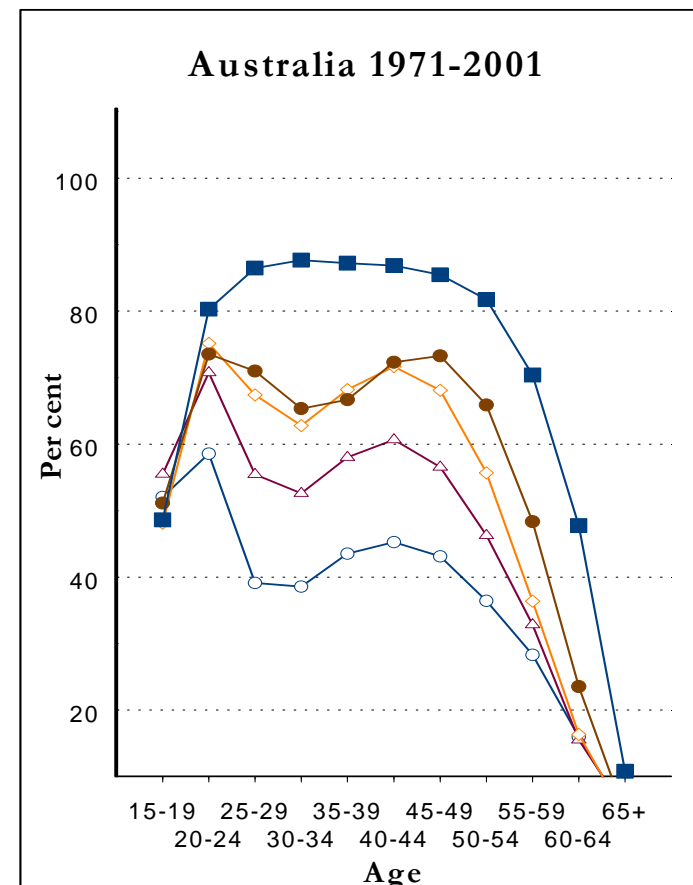
policy options	
AUSTRALIA	JAPAN
<ul style="list-style-type: none">•Increasing the retirement age•Increasing participation rates of women•Increasing the in-migration level	<ul style="list-style-type: none">•Reemployment of older workers•Increasing participation rates of women ?•Increasing the in-migration level?

The role of females:

trends in the female labour force participation in Japan and Australia



- Females 1960
- △— Females 1970
- Females 1980
- ▽— Females 1990
- ▲— Females 2000
- Males 2000

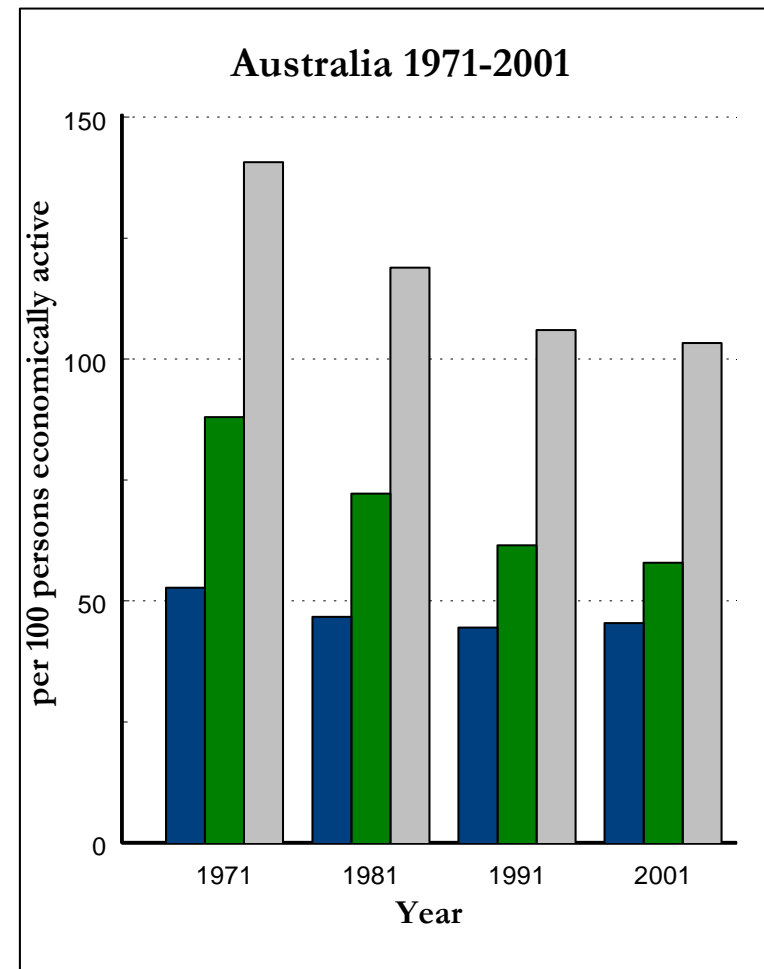
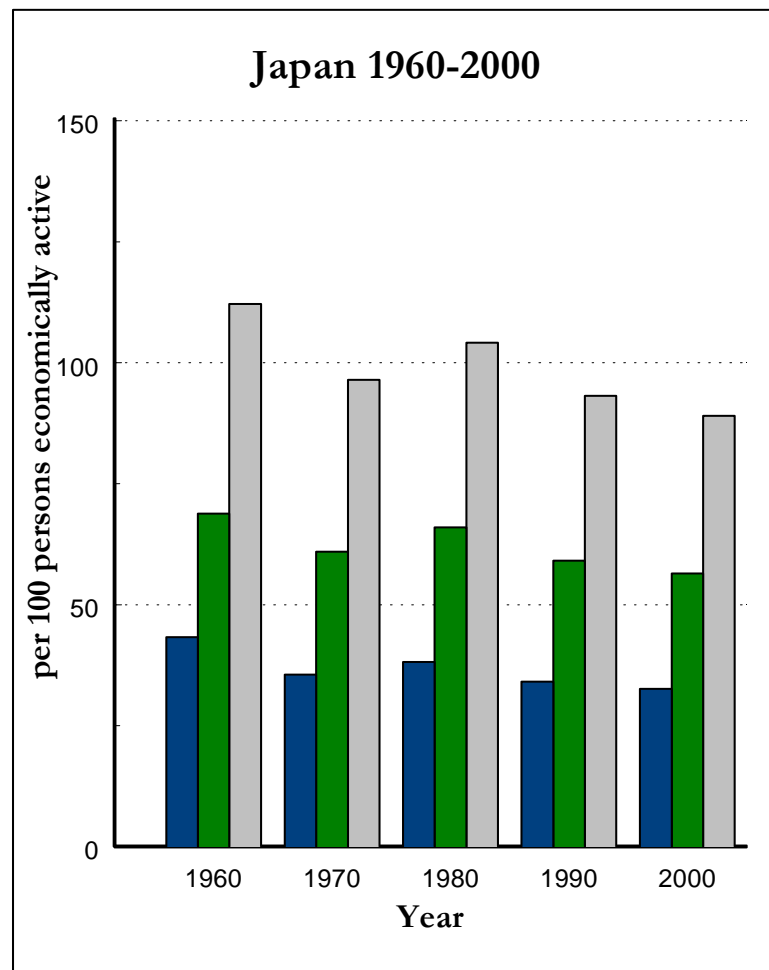


- Females 1971
- △— Females 1981
- ◇— Females 1991
- Females 2001
- Males 2001

Source: Author's calculations based on data from: Japan: Statistics Bureau, Management and Coordination Agency, (Various years) Population Census of Japan and Australia: ABS, (Various years-c), Population Census.

The role of females:

alleviation of the economic dependency in Japan and Australia



■ Male dependency ratio
■ Female dependency ratio
■ Total dependency ratio

The role of females:

future policy challenges in Japan and Australia

Raising female participation rates

- ❑ Difficult to achieve if not accompanied by family and gender equity friendly policies. May itself cause further drop in fertility, hence, aggravate population ageing
- ❑ Benefits of policy may be further compromised by issues of gender substitution in particular industries.